

Grasso W-1

Specifications

Бренд	Grasso
Тип	W-1
Хладагент	NH 3 / Freon
kW at 0°C/+40°C	1932,0*
кВт at -10°C/+40°C	1075,0**
кВт at -30°C/+40°C	506,0***
Разгруженный старт	✓
Управление	✓
производительностью	
m ³ / h	1958 m ³ /h at 2940 RPM & 2397 m ³ /h at 60 Hz
Примечания	*Capacity based on 0°C/+35°C
Примечания	**Capacity based on -15°C/+35°C
Примечания	***Capacity based on -35°C/+35°C
Размеры	1150x680x730 mm (LxWxH)
Stock	1



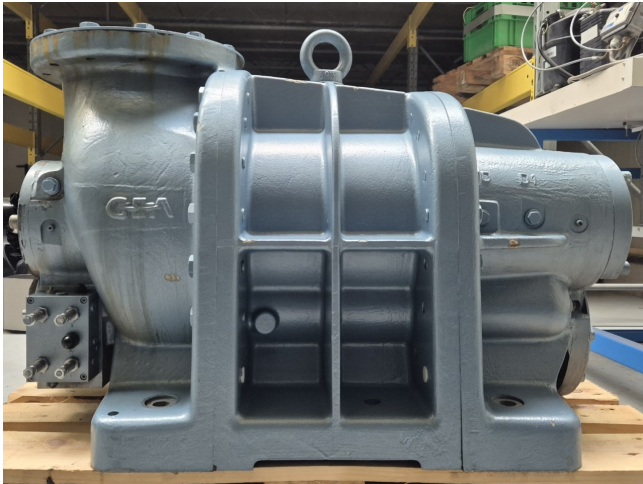
Description

Used Grasso W-1

Used Grasso W-1 screw compressor on NH₃ / Freon. The compressor has a displacement of 1958 m³/h at 2940 RPM & 2397 m³/h at 3600 RPM.

*Why choose for HOSBV? Were not only the largest used refrigeration specialist in Europe, but also, we deliver all equipment including an extensive test, warranty and industrial cleaning.

*Optional we can also perform a new paint job and arrange the logistics.



 Grasso GmbH Refrigeration Technology Holzhauser Str. 165 D-13509 Berlin.			
LF21			
Typ/Type/Type	Serien-Nr./Serial No/N° de série		Baujahr/Built in/An.constr.
W-1	W0223		2004
zulässiger Druck Allowable pressure Pression admissible	20	bar	Vol.Verhältnis Vol. Ratio Rapp. vol.
geom. Volumen Geometric volume, Vol. géométrique	11100	cm³/U cm³/rot	max. Drehz. Max. speed Max. vitesse
Leergewicht Weight empty Poids à vide	1200	kg	Arbeitsmedium Working fluid Fluide utilise
			Kältemittel Refrigerant Frigorigène



